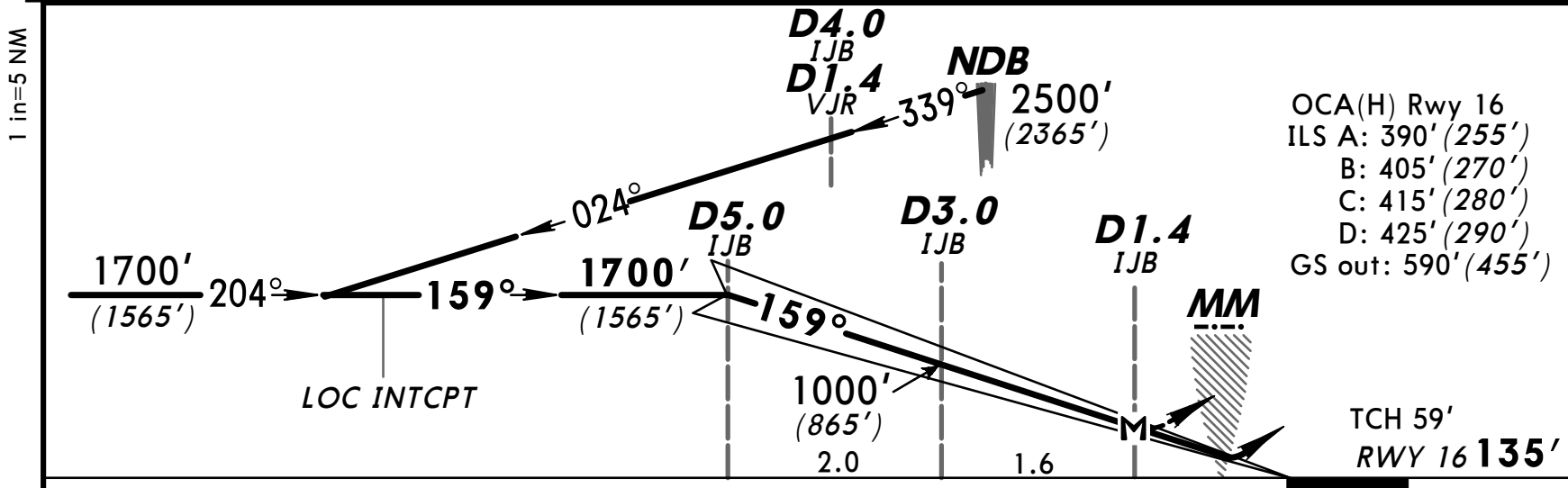
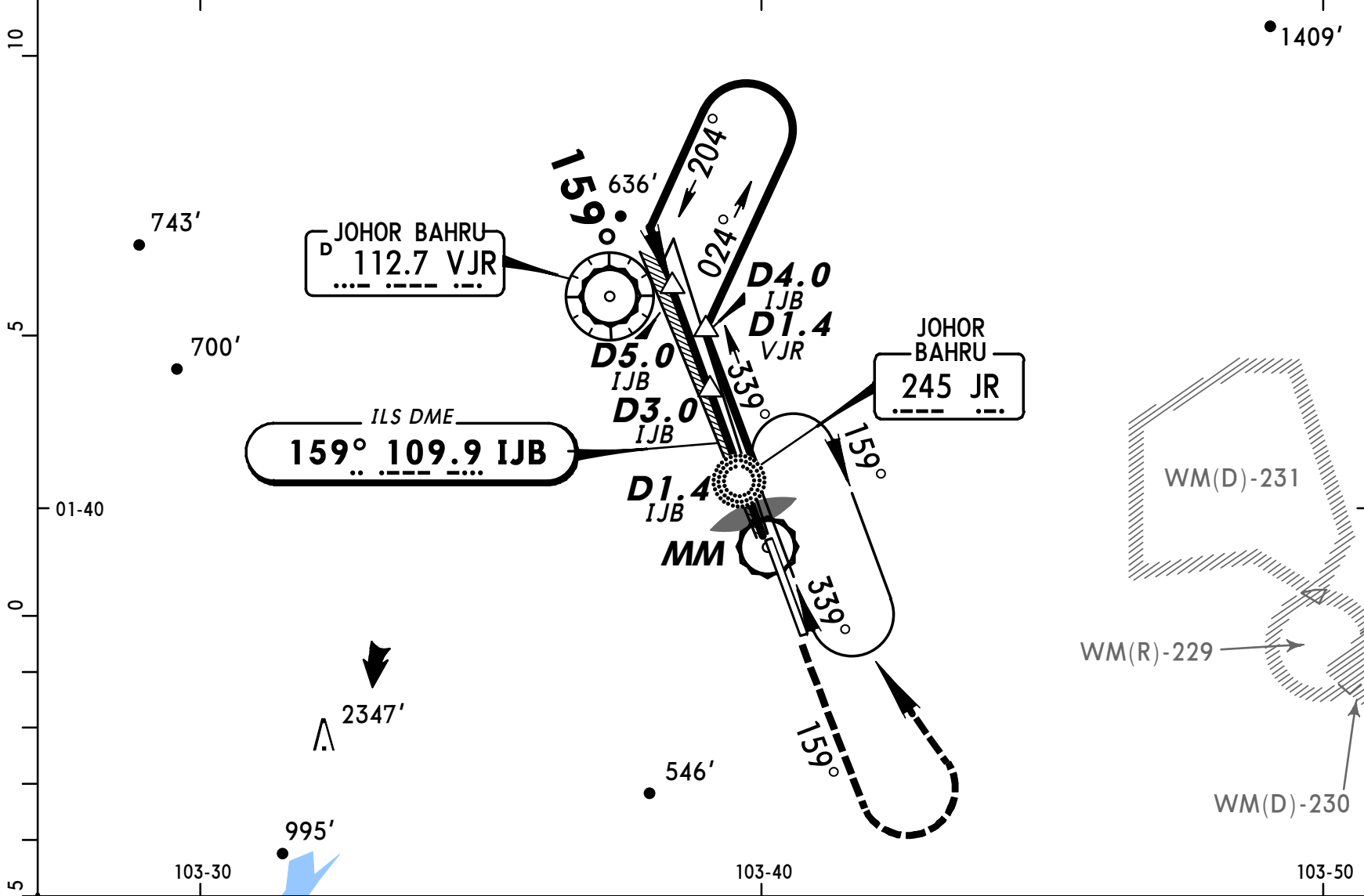


**WMKJ**  
**SULTAN ISMAIL**

**JEPPESEN JOHOR BAHRU, MALAYSIA**  
5 JAN 01 (11-2)  
**NDB ILS Rwy 16**

*ATIS <b>126.6</b>		*JOHOR Approach <b>124.7</b>		*JOHOR Tower <b>122.5</b>		*Ground <b>121.8</b>		
LOC IJB <b>109.9</b>	Final Apch Crs <b>159°</b>	GS D5.0 <b>1700' (1565')</b>	ILS DA(H) Refer to Minimums	Apt Elev 135' RWY 16 <b>135'</b>		<p>MSA JR NDB</p>		
<b>MISSED APCH:</b> Climb on 159° to 1300' or above, turn LEFT and return to holding pattern or as directed by ATC.								
Alt Set: hPa    Rwy Elev: 5 hPa    Trans level: FL 130    Trans alt: 11000' (10865') 1. Procedure based on 185 kts IAS.								



Gnd speed-Kts	70	90	100	120	140	160	PAPI ALS 	1300' ↑ on 159° 	
Descent angle	3.00°	372	478	531	637	743			849
LOC Descent Gradient	5.0%	354	456	506	608	709			810

STRAIGHT-IN LANDING RWY16				CIRCLE-TO-LAND	
ILS DA(H) A: <b>390'</b> (255') C: <b>415'</b> (280') B: <b>405'</b> (270') D: <b>425'</b> (290')		LOC (GS out) MDA(H) <b>590'</b> (455')		Max Kts MDA(H)	
FULL	ALS out	ALS out			
A				100	<b>670'</b> (535') - 1900m
B				135	<b>670'</b> (535') - 2800m
C	800m	1200m	1200m	180	<b>1050'</b> (915') - 3700m
D			1600m	205	<b>1050'</b> (915') - 4600m